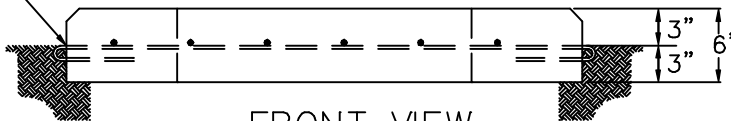


TOP VIEW



FRONT VIEW

NOTES:

1. MOUNTING SURFACE SHALL BE LEVEL, SMOOTH, AND UNIFORM.
2. CONCRETE SHALL HAVE A MINIMUM ULTIMATE 28 DAY COMPRESSIVE STRENGTH OF NOT LESS THAN 3,000 POUNDS. PAD SHALL BE CURED NOT LESS THAN 72 HOURS.
3. VERIFY LOCATION AND ORIENTATION OF PAD WITH MPC BEFORE CONSTRUCTION. EXCEPT BY SPECIAL PERMISSION, PAD SHALL BE LOCATED A MINIMUM OF 10' FROM ALL BUILDINGS.
4. TO PROVIDE SUFFICIENT WORKSPACE AND COOLING, A MINIMUM CLEARANCE SPACE OF 10' SHALL BE PROVIDED AT FRONT, AND 8' AT REAR AND SIDES.
5. REINFORCE PAD WITH 4" OR 6" WIRE MESH.
6. FOR SINGLE PHASE TRANSFORMER SMALLER THAN 167 KVA, USE PLASTIC PAD.



DISTRIBUTION SPECIFICATIONS

©

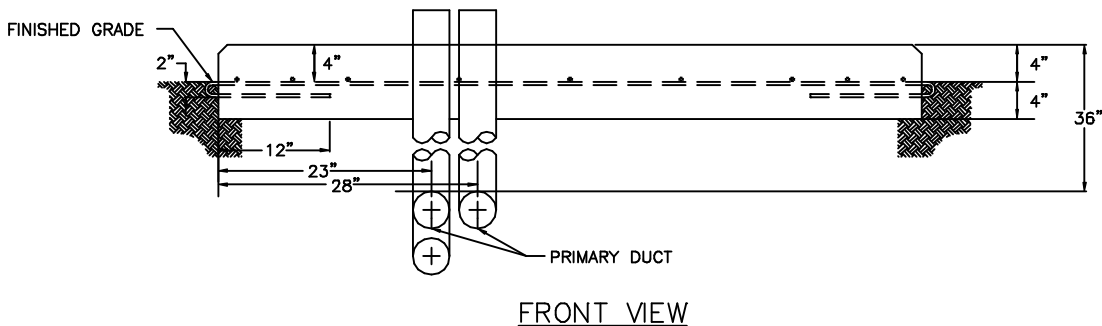
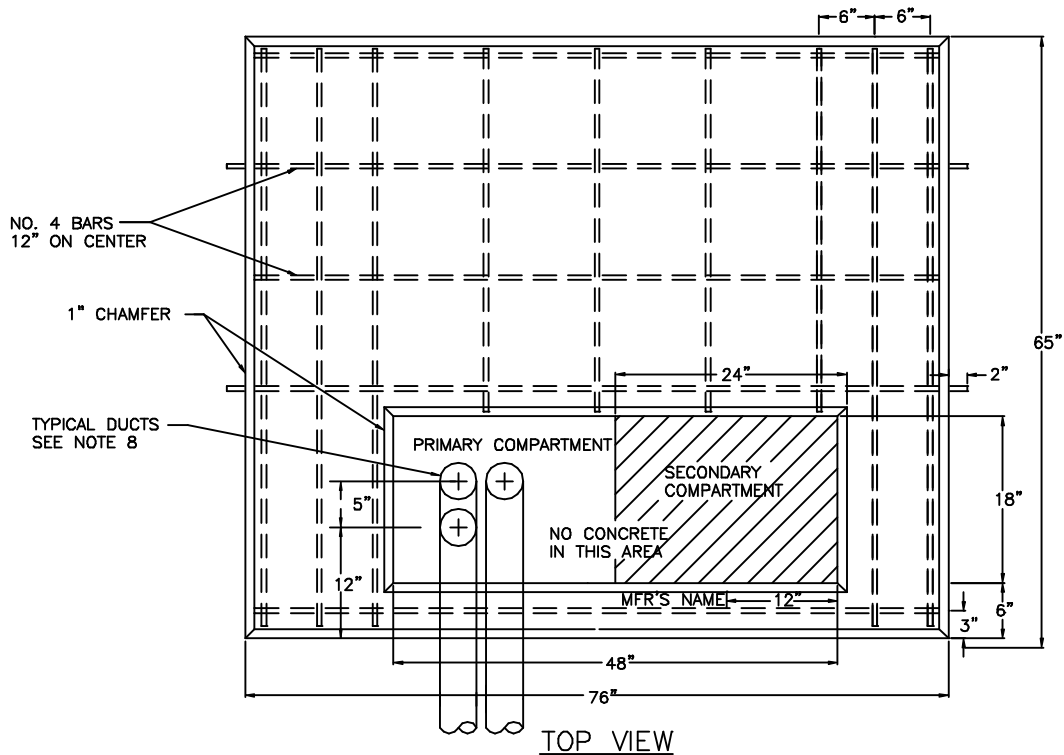
SUBJECT CONCRETE TRANSFORMER PAD

DETAIL SINGLE PHASE 167 KVA

Date 10/13/95

Plate 86

File MS0075



NOTES:

1. MOUNTING SURFACE SHALL BE LEVEL, SMOOTH, AND UNIFORM.
2. CONCRETE SHALL HAVE A MINIMUM ULTIMATE 28 DAY COMPRESSIVE STRENGTH OF NOT LESS THAN 3,000 POUNDS. PAD SHALL BE CURED NOT LESS THAN 72 HOURS.
3. VERIFY LOCATION AND ORIENTATION OF PAD WITH MPC BEFORE CONSTRUCTION. EXCEPT BY SPECIAL PERMISSION, PAD SHALL BE LOCATED A MINIMUM OF 10' FROM ALL BUILDINGS.
4. TO PROVIDE SUFFICIENT WORKSPACE AND COOLING, A MINIMUM CLEAR SPACE OF 10' SHALL BE PROVIDED AT FRONT AND ON THE PRIMARY SIDE, AND 5' AT REAR AND ON SECONDARY SIDE.
5. REINFORCE WITH #4 STEEL BARS IN A 12" X 12" GRID, 4" BELOW TOP OF PAD.
6. LIFTING EYES NOT REQUIRED FOR PADS BUILT IN THEIR PERMANENT LOCATIONS.
7. AVERAGE WEIGHT OF PAD 2,810 POUNDS.
8. NUMBER AND SIZE OF DUCTS TO BE VERIFIED WITH MPC.

**Mississippi Power**   
the southern electric system

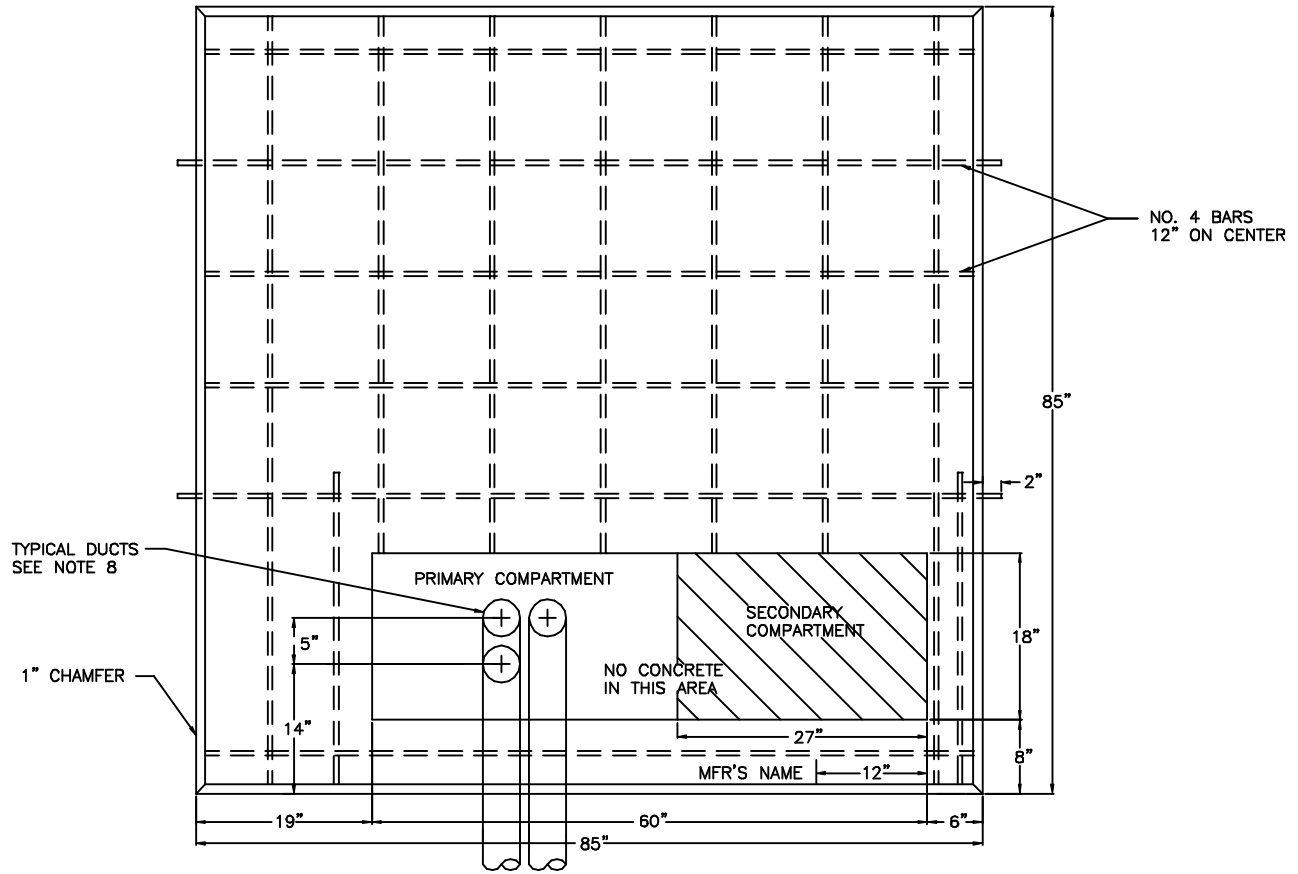
DISTRIBUTION SPECIFICATIONS ©

SUBJECT CONCRETE TRANSFORMER PAD  
DETAIL 3 PHASE 75 - 750 KVA

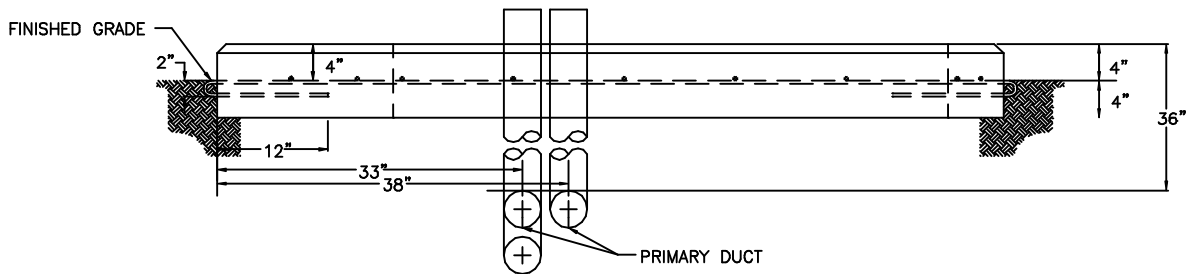
Date 10/13/95

Plate 87

File MS0077




TOP VIEW



FRONT VIEW

NOTES:

1. MOUNTING SURFACE SHALL BE LEVEL, SMOOTH, AND UNIFORM.
2. CONCRETE SHALL HAVE A MINIMUM ULTIMATE 28 DAY COMPRESSIVE STRENGTH OF NOT LESS THAN 3,000 POUNDS. PAD SHALL BE CURED NOT LESS THAN 72 HOURS.
3. VERIFY LOCATION AND ORIENTATION OF PAD WITH MPC BEFORE CONSTRUCTION. EXCEPT BY SPECIAL PERMISSION, PAD SHALL BE LOCATED A MINIMUM OF 10' FROM ALL BUILDINGS.
4. TO PROVIDE SUFFICIENT WORKSPACE AND COOLING, A MINIMUM CLEAR SPACE OF 10' SHALL BE PROVIDED AT FRONT AND ON THE PRIMARY SIDE, AND 5' AT REAR AND ON SECONDARY SIDE.
5. REINFORCE WITH #4 STEEL BARS IN A 12" X 12" GRID, 4" BELOW TOP OF PAD.
6. LIFTING EYES NOT REQUIRED FOR PADS BUILT IN THEIR PERMANENT LOCATIONS.
7. AVERAGE WEIGHT OF PAD 4,414 POUNDS.
8. NUMBER AND SIZE OF DUCTS TO BE VERIFIED WITH MPC.

 <p><b>Mississippi Power</b> the southern electric system</p>	DISTRIBUTION SPECIFICATIONS ©	
	<p>SUBJECT <u>CONCRETE TRANSFORMER PAD</u></p> <p>DETAIL <u>3 PHASE 1,000 - 2,500 KVA</u></p>	
Date <u>10/13/95</u>	Plate <u>88</u>	File <u>MS0076</u>