



Demographic and Income Profile

Jasper County, MS
 Jasper County, MS (28061)
 Geography: County

Prepared by Esri

Summary	Census 2010	2018	2023
Population	17,062	17,235	17,422
Households	6,798	6,943	7,086
Families	4,710	4,730	4,796
Average Household Size	2.50	2.47	2.45
Owner Occupied Housing Units	5,817	5,897	6,020
Renter Occupied Housing Units	981	1,046	1,066
Median Age	40.6	42.2	43.9
Trends: 2018 - 2023 Annual Rate	Area	State	National
Population	0.22%	0.27%	0.83%
Households	0.41%	0.28%	0.79%
Families	0.28%	0.15%	0.71%
Owner HHs	0.41%	0.45%	1.16%
Median Household Income	2.66%	2.79%	2.50%

Households by Income	2018		2023	
	Number	Percent	Number	Percent
<\$15,000	1,488	21.4%	1,352	19.1%
\$15,000 - \$24,999	1,074	15.5%	967	13.6%
\$25,000 - \$34,999	938	13.5%	874	12.3%
\$35,000 - \$49,999	998	14.4%	954	13.5%
\$50,000 - \$74,999	1,173	16.9%	1,280	18.1%
\$75,000 - \$99,999	545	7.8%	676	9.5%
\$100,000 - \$149,999	398	5.7%	588	8.3%
\$150,000 - \$199,999	154	2.2%	176	2.5%
\$200,000+	175	2.5%	219	3.1%
Median Household Income	\$34,599		\$39,444	
Average Household Income	\$51,015		\$59,289	
Per Capita Income	\$20,639		\$24,201	

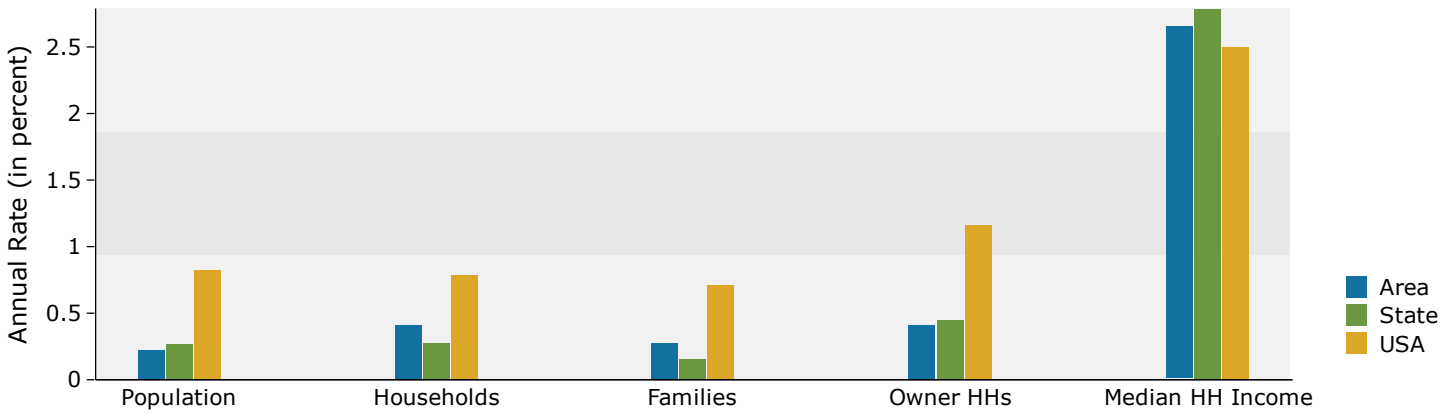
Population by Age	Census 2010		2018		2023	
	Number	Percent	Number	Percent	Number	Percent
0 - 4	1,101	6.5%	1,040	6.0%	992	5.7%
5 - 9	1,060	6.2%	1,074	6.2%	1,036	5.9%
10 - 14	1,182	6.9%	1,078	6.3%	1,141	6.5%
15 - 19	1,274	7.5%	971	5.6%	1,059	6.1%
20 - 24	904	5.3%	935	5.4%	806	4.6%
25 - 34	1,906	11.2%	2,103	12.2%	1,867	10.7%
35 - 44	2,067	12.1%	1,965	11.4%	2,050	11.8%
45 - 54	2,537	14.9%	2,216	12.9%	2,124	12.2%
55 - 64	2,296	13.5%	2,565	14.9%	2,512	14.4%
65 - 74	1,575	9.2%	2,002	11.6%	2,290	13.1%
75 - 84	866	5.1%	971	5.6%	1,210	6.9%
85+	294	1.7%	315	1.8%	335	1.9%

Race and Ethnicity	Census 2010		2018		2023	
	Number	Percent	Number	Percent	Number	Percent
White Alone	7,894	46.3%	7,848	45.5%	7,856	45.1%
Black Alone	8,970	52.6%	9,131	53.0%	9,257	53.1%
American Indian Alone	17	0.1%	30	0.2%	38	0.2%
Asian Alone	16	0.1%	30	0.2%	43	0.2%
Pacific Islander Alone	1	0.0%	1	0.0%	1	0.0%
Some Other Race Alone	62	0.4%	94	0.5%	126	0.7%
Two or More Races	102	0.6%	101	0.6%	101	0.6%
Hispanic Origin (Any Race)	136	0.8%	209	1.2%	266	1.5%

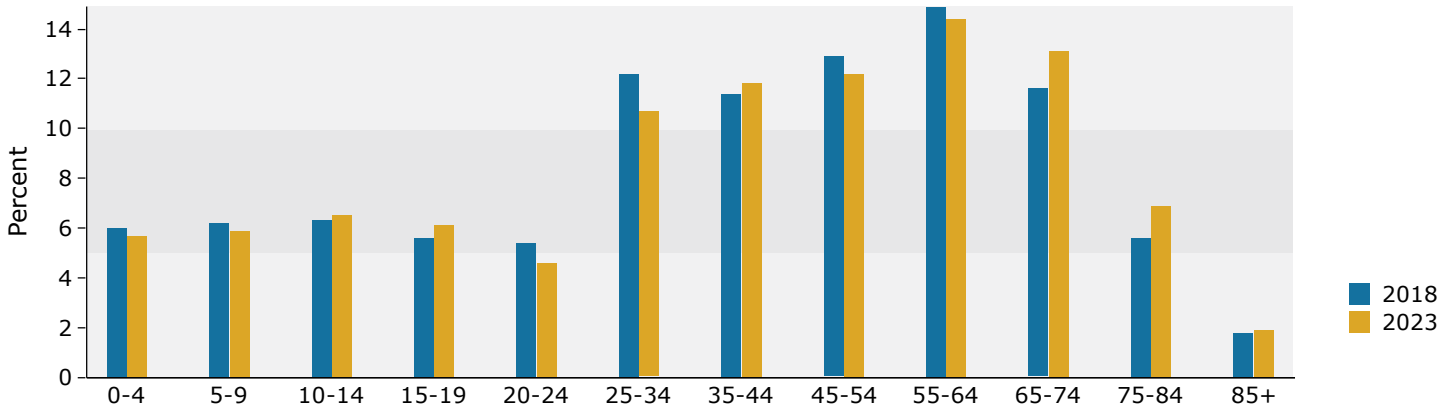
Data Note: Income is expressed in current dollars.

Source: U.S. Census Bureau, Census 2010 Summary File 1. Esri forecasts for 2018 and 2023.

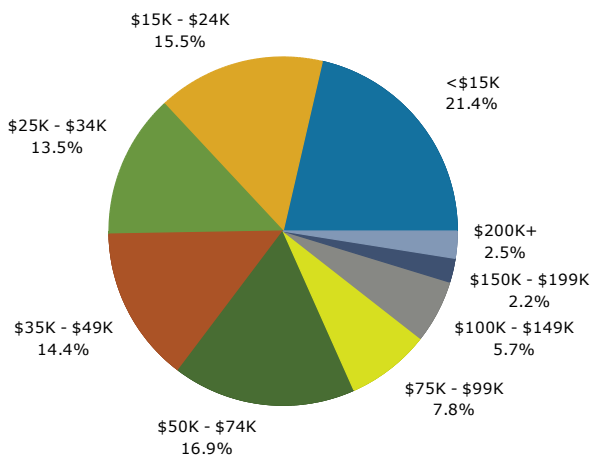
Trends 2018-2023



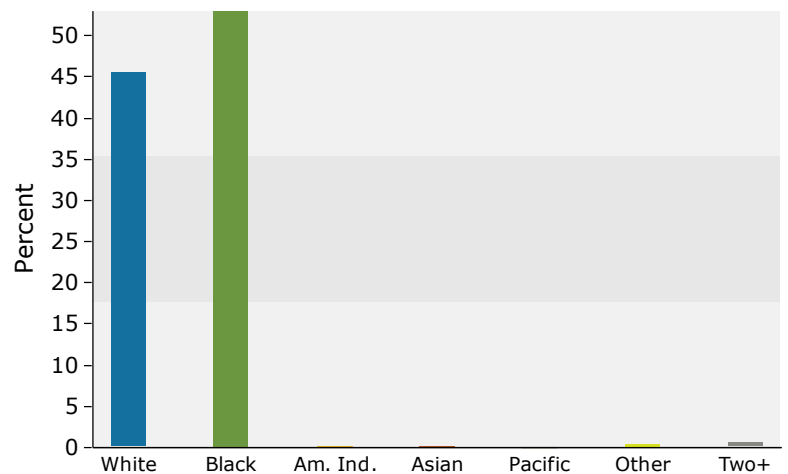
Population by Age



2018 Household Income



2018 Population by Race



2018 Percent Hispanic Origin: 1.2%