



Demographic and Income Profile

Neshoba County, MS
 Neshoba County, MS (28099)
 Geography: County

Prepared by Esri

Summary	Census 2010	2018	2023
Population	29,676	29,483	29,135
Households	10,856	10,774	10,641
Families	7,808	7,629	7,490
Average Household Size	2.70	2.70	2.70
Owner Occupied Housing Units	8,108	7,578	7,489
Renter Occupied Housing Units	2,748	3,196	3,152
Median Age	35.3	36.8	37.8
Trends: 2018 - 2023 Annual Rate	Area	State	National
Population	-0.24%	0.27%	0.83%
Households	-0.25%	0.28%	0.79%
Families	-0.37%	0.15%	0.71%
Owner HHs	-0.24%	0.45%	1.16%
Median Household Income	0.89%	2.79%	2.50%

Households by Income	2018		2023	
	Number	Percent	Number	Percent
<\$15,000	2,120	19.7%	2,042	19.2%
\$15,000 - \$24,999	1,559	14.5%	1,472	13.8%
\$25,000 - \$34,999	1,420	13.2%	1,371	12.9%
\$35,000 - \$49,999	1,391	12.9%	1,294	12.2%
\$50,000 - \$74,999	1,724	16.0%	1,625	15.3%
\$75,000 - \$99,999	1,156	10.7%	1,138	10.7%
\$100,000 - \$149,999	925	8.6%	1,166	11.0%
\$150,000 - \$199,999	283	2.6%	321	3.0%
\$200,000+	196	1.8%	212	2.0%
Median Household Income	\$37,390		\$39,077	
Average Household Income	\$54,270		\$59,368	
Per Capita Income	\$20,061		\$21,915	

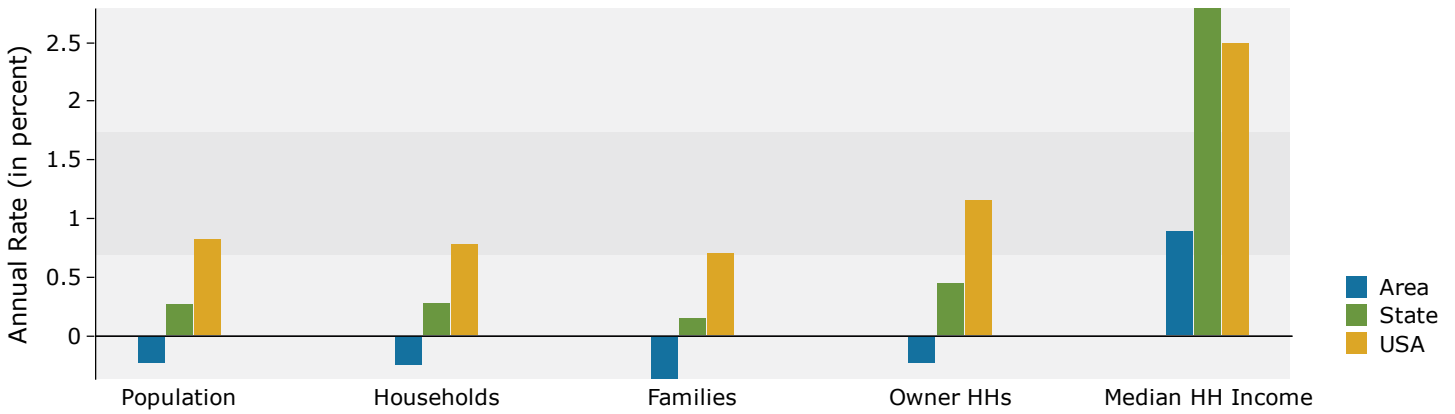
Population by Age	Census 2010		2018		2023	
	Number	Percent	Number	Percent	Number	Percent
0 - 4	2,482	8.4%	2,286	7.8%	2,177	7.5%
5 - 9	2,399	8.1%	2,291	7.8%	2,218	7.6%
10 - 14	2,279	7.7%	2,162	7.3%	2,219	7.6%
15 - 19	2,135	7.2%	1,919	6.5%	1,999	6.9%
20 - 24	1,761	5.9%	1,758	6.0%	1,617	5.6%
25 - 34	3,663	12.3%	3,703	12.6%	3,376	11.6%
35 - 44	3,566	12.0%	3,514	11.9%	3,436	11.8%
45 - 54	3,872	13.0%	3,428	11.6%	3,376	11.6%
55 - 64	3,523	11.9%	3,668	12.4%	3,441	11.8%
65 - 74	2,121	7.1%	2,836	9.6%	3,108	10.7%
75 - 84	1,363	4.6%	1,344	4.6%	1,595	5.5%
85+	512	1.7%	574	1.9%	573	2.0%

Race and Ethnicity	Census 2010		2018		2023	
	Number	Percent	Number	Percent	Number	Percent
White Alone	17,974	60.6%	17,342	58.8%	16,666	57.2%
Black Alone	6,207	20.9%	6,239	21.2%	6,229	21.4%
American Indian Alone	4,815	16.2%	4,987	16.9%	5,124	17.6%
Asian Alone	102	0.3%	136	0.5%	166	0.6%
Pacific Islander Alone	9	0.0%	9	0.0%	9	0.0%
Some Other Race Alone	140	0.5%	182	0.6%	216	0.7%
Two or More Races	429	1.4%	588	2.0%	725	2.5%
Hispanic Origin (Any Race)	469	1.6%	627	2.1%	755	2.6%

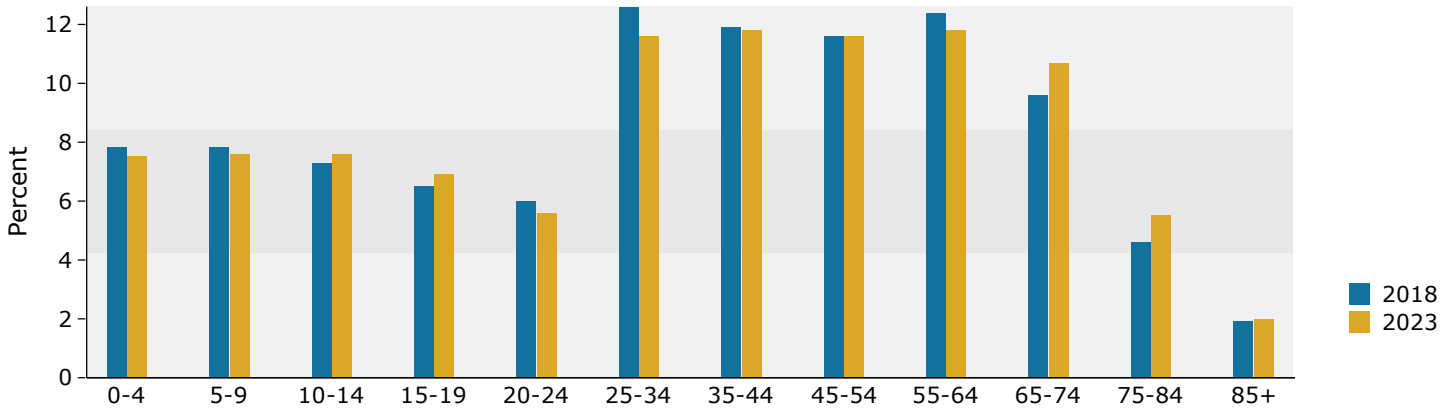
Data Note: Income is expressed in current dollars.

Source: U.S. Census Bureau, Census 2010 Summary File 1. Esri forecasts for 2018 and 2023.

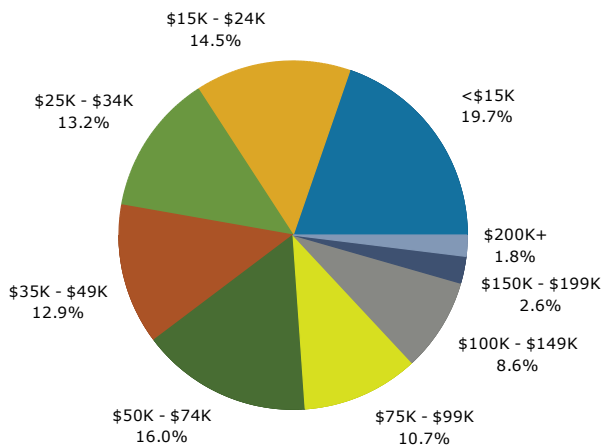
Trends 2018-2023



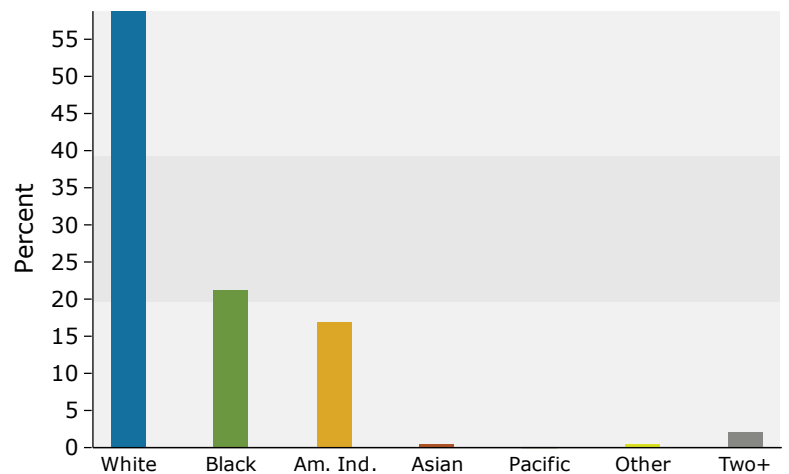
Population by Age



2018 Household Income



2018 Population by Race



2018 Percent Hispanic Origin: 2.1%

Source: U.S. Census Bureau, Census 2010 Summary File 1. Esri forecasts for 2018 and 2023.