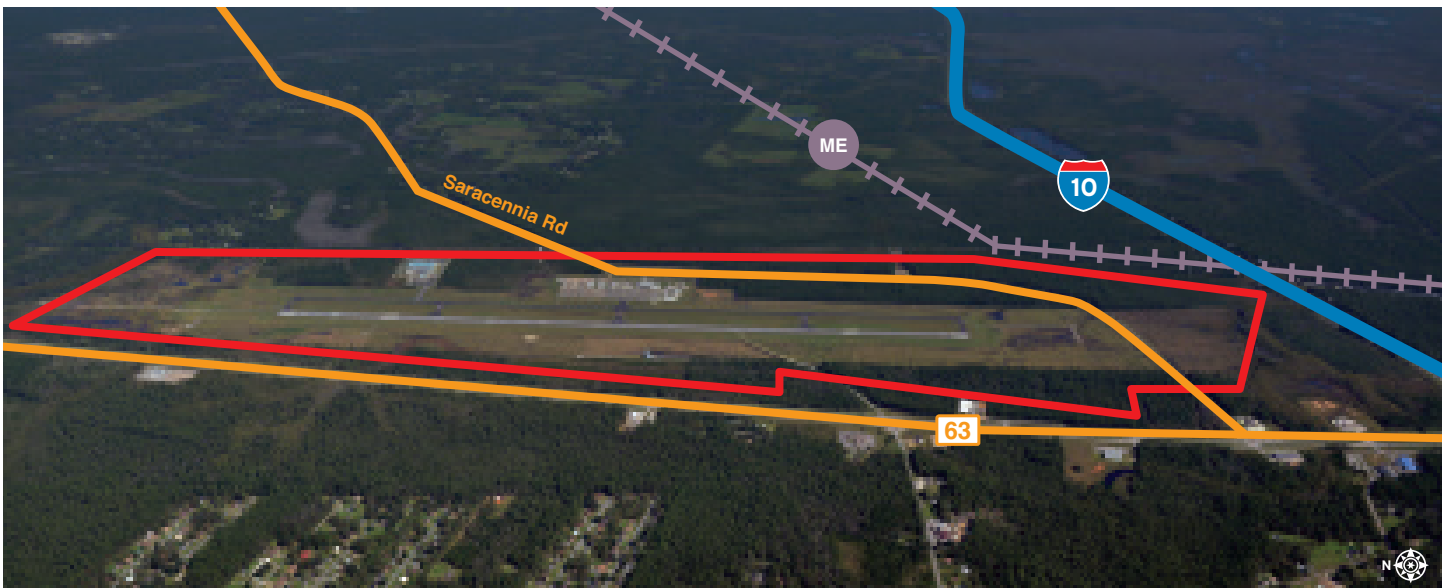


The Jackson County Aviation Technology Park is located within the Trent Lott International Airport. This county-owned park contains 230 developable acres and is located at the center of one of the most advanced aerospace corridors in the Southeast, just 35 miles from the Airbus Final Assembly Plant at Brookley Field in Mobile, AL. The park is under a wetlands master plan approved by the U.S. Army Corp of Engineers which allows aviation and aerospace projects to obtain federal permits in 30 to 45 days. Sites are available with direct access to the runway. The four-lane Mississippi Highway 63 and I-10 are within a half mile of the park.



## GENERAL SITE OVERVIEW

<b>Location</b>	Lat. 30.462591 / Long. -88.528198
<b>City</b>	Moss Point
<b>County</b>	Jackson
<b>Site ownership</b>	Public
<b>Site acreage</b>	230 acres / 93.08 hectares
<b>Developable acreage</b>	230 acres / 93.08 hectares
<b>Land for purchase or lease</b>	Lease
<b>Distance to interstate or highway</b>	Less than 1 mile from Highway 63
<b>Rail service</b>	Yes (Mississippi Export Railroad)

## SITE UTILITIES

<b>Electric lines serving the site</b>	Singing River Electric Power Association 23 kV
<b>Natural gas</b>	8" line at 60 psi
<b>Water line size serving the site</b>	12"
<b>Water system capacity</b>	2.5 MGD
<b>Excess water capacity</b>	1 MGD
<b>Wastewater line size serving the site</b>	12"
<b>Wastewater system capacity</b>	4.5 MGD
<b>Excess wastewater capacity</b>	1 MGD

## TECHNICAL STUDIES AND REPORTS

The Phase I Environmental Survey Assessment, endangered species, cultural resources, geotechnical and wetlands reports have been completed and are available upon request.

## WORKFORCE DATA

Civilian Labor Force	Unemployed	Unemployment Rate	Employed
349,903	21,727	7.8	328,176

Drive Time	2020 Population	2025 Population
30 minutes	212,609	216,925
45 minutes	647,194	661,397
60 minutes	879,524	906,244

**SOURCES:**

MDES Labor: <http://mdes.ms.gov/media/173124/prinalf2020.pdf>

ESRI-Demo-Inc Profiles: <https://bao.arcgis.com>

EMSI: <http://www.emsi.com>



mississippipowerED.com  
mpcecodev@southernco.com  
800.528.5196