

# TYPICAL WIRING OF METER SOCKET FOR SINGLE PHASE, THREE WIRE OVERHEAD SERVICE

---

## **A. GENERAL NOTES:**

- Service entrance line and load conductors, conduit straps, weatherhead, lock nuts, bushings, connectors, and miscellaneous mounting hardware furnished and installed by customer.
- Meter socket, meter socket hub and service drop attachment device furnished by Company and installed by customer.
- Meter and service drop furnished and installed by Company.
- Placement of meter socket in alley ways or areas where meter is subject to damage shall require advance approval of a qualified employee.

## **B. MOUNTING:**

- Meter socket and conduit shall be surface mounted without brick or other exterior veneers encasing the equipment.
- Meter socket and conduit straps shall be fastened to building using lead anchors (brick or solid masonry), toggle bolts (other masonry siding) or wood screws (studs, solid lumber). All screws and bolts shall be minimum #12 corrosion resistant. A minimum of four (4) fasteners shall be used to mount socket.

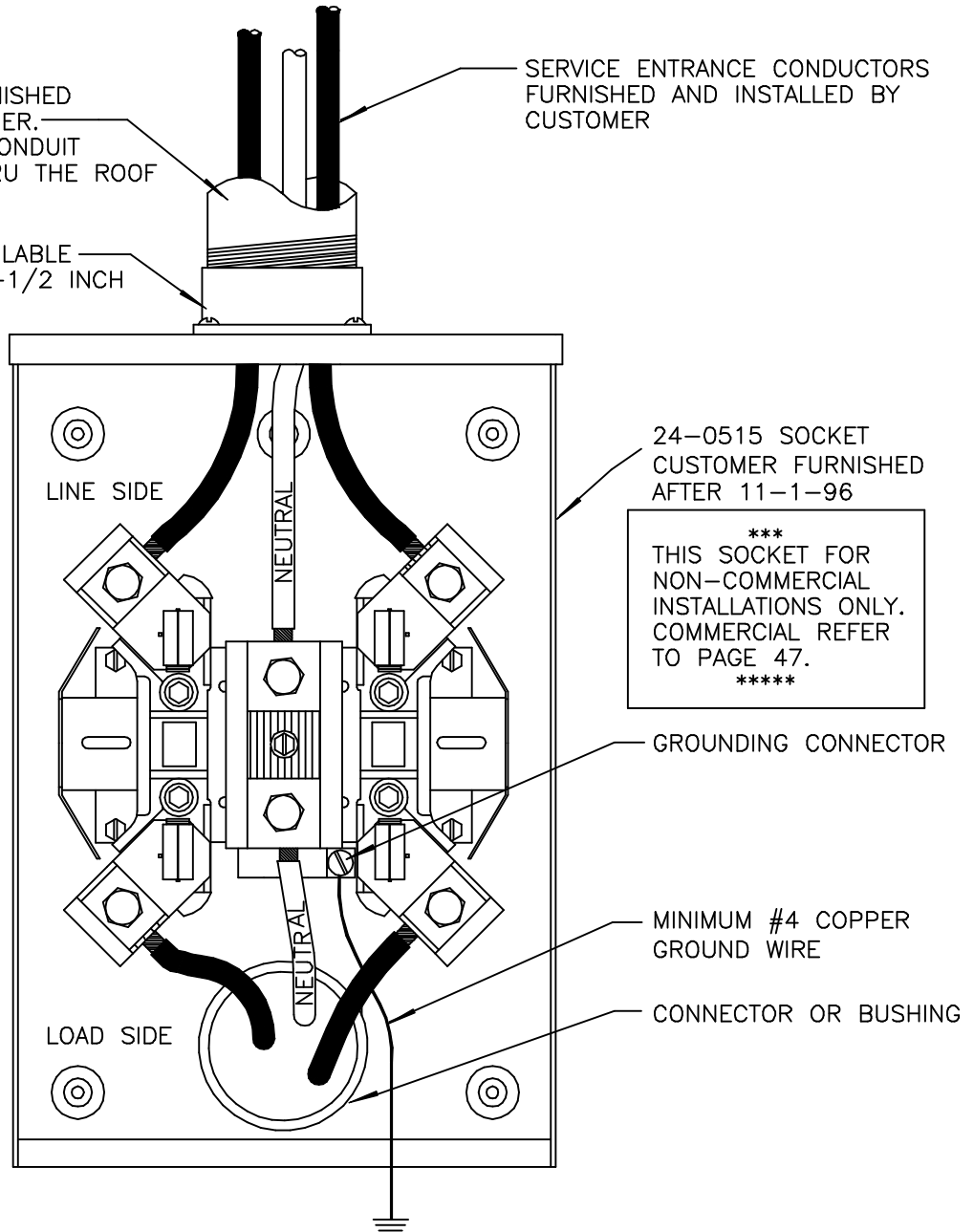
## **C. CONNECTIONS:**

Customer shall apply a non-grit type corrosion inhibitor to connections and terminate them by torquing to manufacturer's specifications located in the enclosure. **Do not over-torque!**

RIGID STEEL CONDUIT FURNISHED AND INSTALLED BY CUSTOMER. TYPE SE CABLE OR PVC CONDUIT PERMISSIBLE FOR NON THRU THE ROOF INSTALLATIONS

SERVICE ENTRANCE CONDUCTORS FURNISHED AND INSTALLED BY CUSTOMER

METER SOCKET HUB AVAILABLE AT 1, 1-1/4, 2 AND 2-1/2 INCH



24-0515 SOCKET CUSTOMER FURNISHED AFTER 11-1-96

\*\*\* THIS SOCKET FOR NON-COMMERCIAL INSTALLATIONS ONLY. COMMERCIAL REFER TO PAGE 47. \*\*\*\*\*

GROUNDING CONNECTOR

MINIMUM #4 COPPER GROUND WIRE

CONNECTOR OR BUSHING

**Mississippi Power**  
*the southern electric system*



DISTRIBUTION SPECIFICATIONS



SUBJECT SINGLE PHASE, 3 WIRE OVERHEAD SERVICE

DETAIL \_\_\_\_\_

Date 05/30/96

Plate 43

File MS0061

# TYPICAL INSTALLATION FOR SINGLE PHASE, THREE WIRE, 200 AMPERE UNDERGROUND SERVICE

## A. GENERAL NOTES:

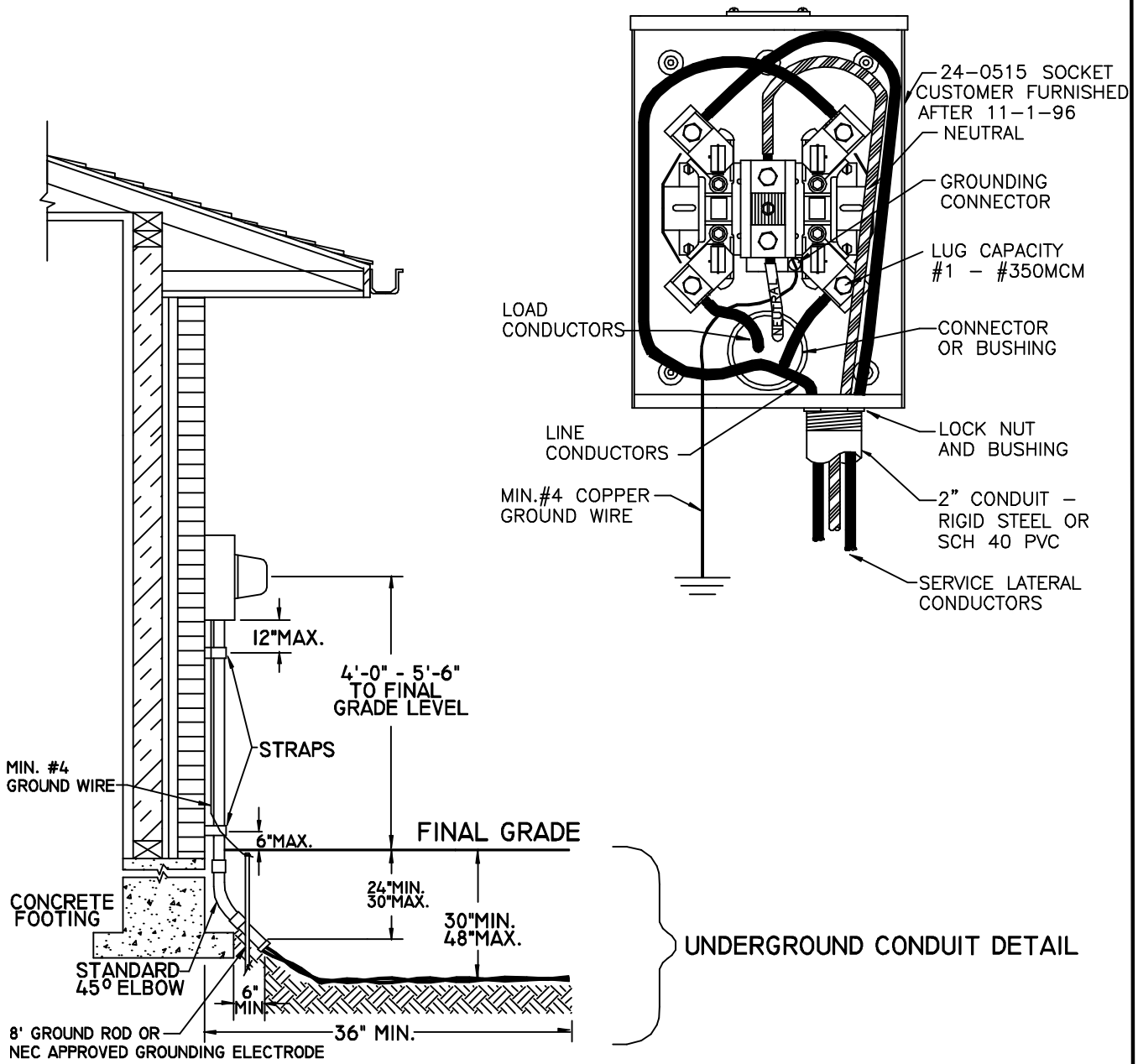
- Service entrance line and load conductors, conduit straps, weatherhead, lock nuts, bushings, connectors, and miscellaneous mounting hardware furnished and installed by customer.
- Meter socket, meter socket hub and service drop attachment device furnished by Company and installed by customer.
- Meter and service lateral furnished and installed by Company. Customer to provide approximate final grade level within six inches (6") prior to service lateral installation.
- Requirements regarding accessibility to equipment and unobstructed working space adjacent to metering equipment are specified under Service Locations.
- Placement of meter socket in alley ways or areas where meter is subject to damage shall require advance approval of a qualified employee.


## B. MOUNTING:


- Meter socket and conduit shall be surface mounted without brick or other exterior veneers encasing the equipment.
- Meter socket and conduit straps shall be fastened to building using lead anchors (brick or solid masonry), toggle bolts (other masonry siding) or wood screws (studs, solid lumber). All screws and bolts shall be minimum #12 corrosion resistant. A minimum of four (4) fasteners shall be used to mount socket.
- Minimum two inch (2") trade size rigid metal conduit or schedule 40 PVC furnished and installed by customer. MPC to specify size of conduit.
- Conduit ends shall be equipped with a proper bushing to protect conductors.

## C. CONNECTIONS:

Customer shall apply a non-grit type corrosion inhibitor to connections and terminate them by torquing to manufacturer's specifications located in the enclosure. **Do not over-torque!**



NOTE: CROSSHATCHED  AREA DENOTES UNDISTURBED OR RE-COMPACTED SOIL DIRECTLY BENEATH CABLE (EXTENDING 36" MIN. FROM BUILDING) AND CONDUIT (OR ELBOW) TO PREVENT LATER SETTLING OF CABLE AND CONDUIT. FAILURE TO PROVIDE COMPACT SOIL MAY RESULT IN DAMAGE TO CABLES, CONDUIT, METER SOCKET, & PREMISE.

 <p><b>Mississippi Power</b> the southern electric system</p>	DISTRIBUTION SPECIFICATIONS <span style="float: right;">©</span>	
	SUBJECT <u>SINGLE PHASE, 3 WIRE, 200 AMP UNDERGROUND SERVICE</u>	
Date <u>05/30/96</u>	Plate <u>45</u>	File <u>MS0063</u>

# TYPICAL WIRING FOR SINGLE PHASE, THREE WIRE 400 AMP SERVICE

## **A. GENERAL NOTES:**

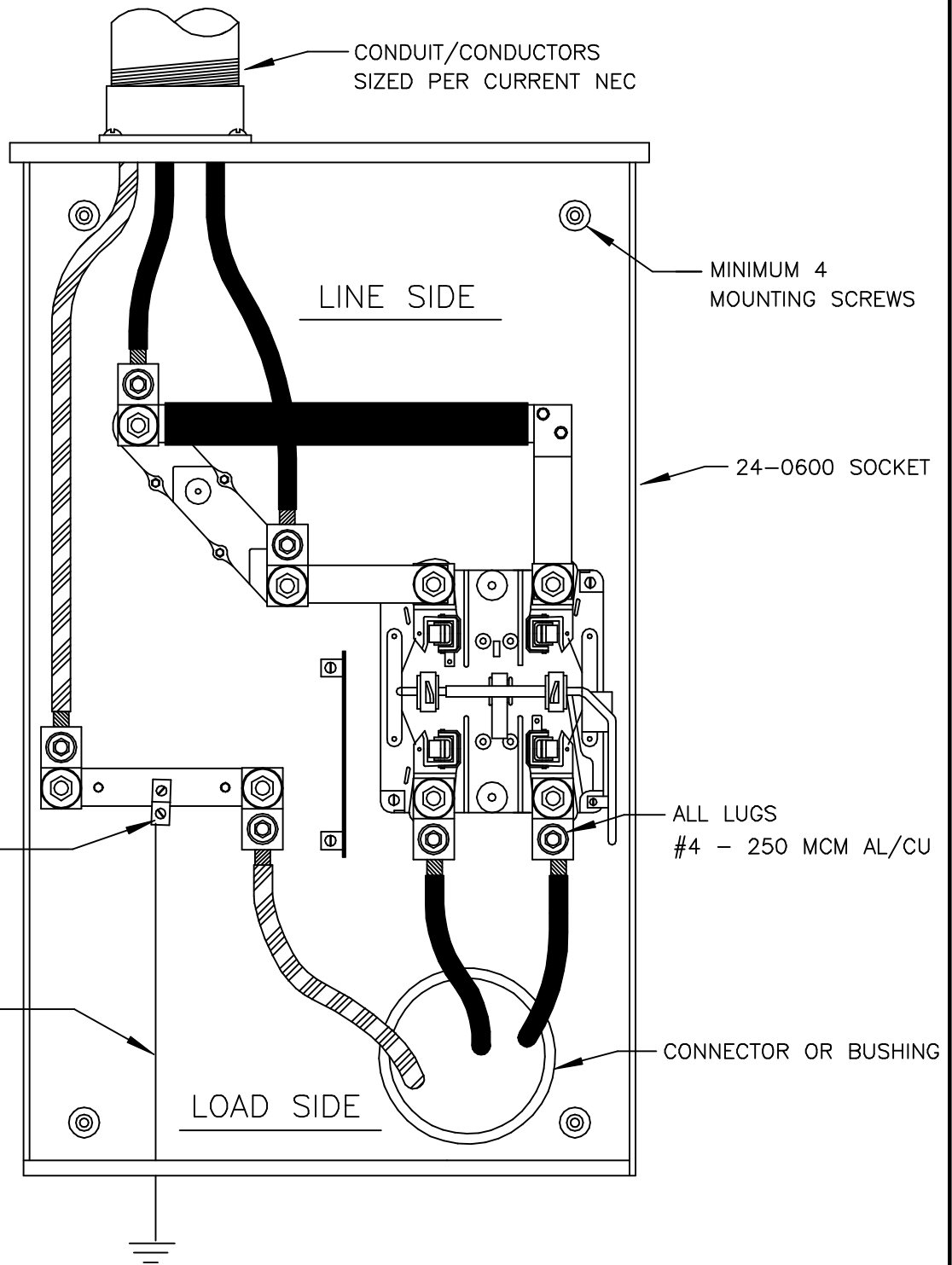
- Service entrance line and load conductors, conduit straps, weatherhead, lock nuts, bushings, connectors, and miscellaneous mounting hardware furnished and installed by customer.
- Installation available for services greater than 200 amperes but less than 320 amperes continuous.
- Meter socket and closing plate shall be furnished by Mississippi Power and installed by customer.
- Meter and service lateral furnished and installed by Company. Customer to provide approximate final grade level within six inches (6") prior to service lateral installation.
- Requirements regarding accessibility to equipment and unobstructed working space adjacent to metering equipment are specified under Service Locations.
- Placement of meter socket in alley ways or areas where meter is subject to damage shall require advance approval of a qualified employee.

## **B. MOUNTING:**

- Meter socket and conduit shall be surface mounted without brick or other exterior veneers encasing the equipment.
- Meter socket and conduit straps shall be fastened to building using lead anchors (brick or solid masonry), toggle bolts (other masonry siding) or wood screws (studs, solid lumber). All screws and bolts shall be #12 corrosion resistant. A minimum of four (4) fasteners shall be used to mount socket.
- Two inch (2") trade size rigid metal conduit or schedule 40 PVC furnished and installed by customer.
- Conduit ends shall be equipped with a proper bushing to protect conductors.

## **C. CONNECTIONS:**

Customer shall apply a non-grit type corrosion inhibitor to connections and terminate them by torquing to manufacturer's specifications located in the enclosure. **Do not over-torque!**



**Mississippi Power**   
*the southern electric system*

DISTRIBUTION SPECIFICATIONS ©

SUBJECT SINGLE PHASE 3 WIRE SERVICE USING CLASS 320 SOCKET

DETAIL \_\_\_\_\_

Date 05/30/96

Plate 47

File MS0073