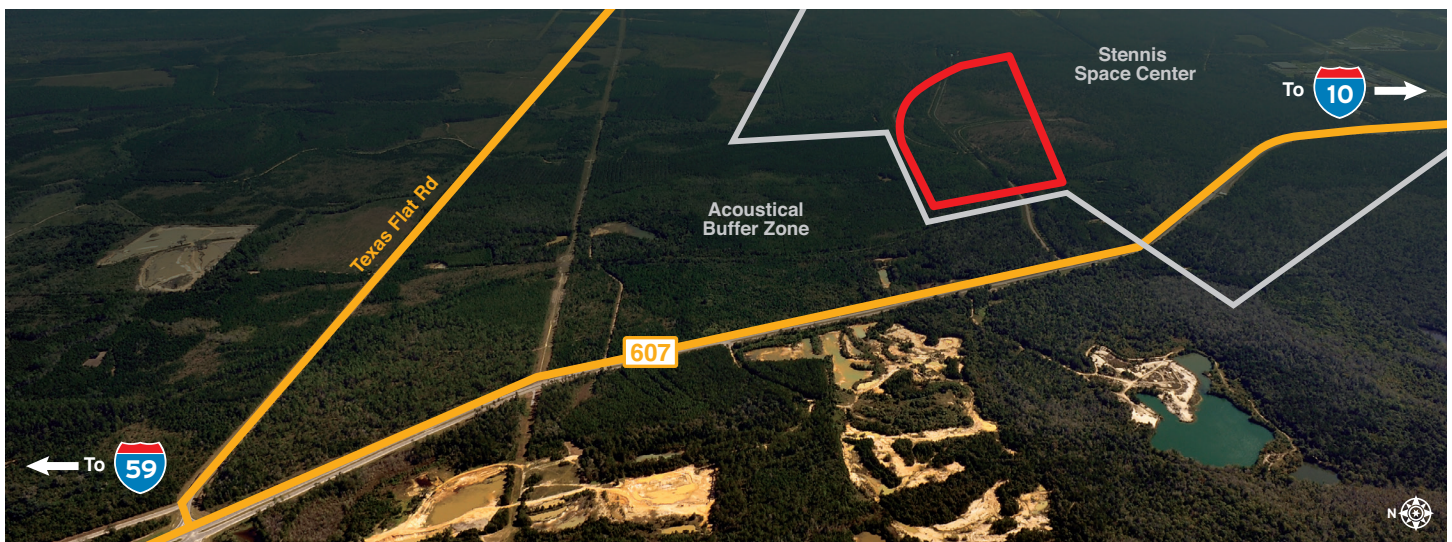


John C. Stennis Space Center is a multi-disciplinary, multi-tenant federal facility with more than 30 resident agencies engaged in a broad spectrum of initiatives, including data storage, geospatial and earth sciences, satellite and rocket assembly and jet engine testing. Surrounded by a 125,000-acre acoustic buffer zone, Stennis Space Center's original mission was to test rocket engines for NASA. Today, next generation rockets are tested at the Center's rocket engine test stands for space exploration.

Enterprise Park is a newly designated 1,100-acre development within Stennis Space Center designed to promote commercial development partnerships within the gates of Stennis. This area of Stennis Space Center offers a unique location opportunity through a certified, 190-acre industrial park. Enterprise Park is near I-10 and I-59 with easy access to two commercial airports and three ports.



GENERAL SITE OVERVIEW

Location	Lat. 30.411105 / Long. -89.630007
City	Stennis Space Center
County	Hancock
Site ownership	U.S. Government
Site acreage	250 acres / 101.17 hectares
Developable acreage	190 acres / 76.89 hectares
Land for purchase or lease	Lease
Distance to interstate or highway	8 miles to I-10 and 5.5 miles to I-59
Rail service	No

SITE UTILITIES

Electric lines serving the site	13 kV
Natural gas	11" line at 50 PSI on-site
Water line size serving the site	16"
Water system capacity	7 MGD
Excess water capacity	3.1 MGD
Wastewater system capacity	.345 MGD
Excess wastewater capacity	.243 MGD

TECHNICAL STUDIES AND REPORTS

The Phase I Environmental Survey Assessment, endangered species, cultural resources, geotechnical and wetlands reports have been completed and are available upon request.

WORKFORCE DATA

Civilian Labor Force	Unemployed	Unemployment Rate	Employed
245,046	17,000	7.6	226,350

Drive Time	2020 Population	2025 Population
30 minutes	204,012	212,446
45 minutes	767,669	803,823
60 minutes	1,538,924	1,585,585

SOURCES:

MDES Labor: <http://mdes.ms.gov/media/173124/prinalf2020.pdf>

ESRI-Demo-Inc Profiles: <https://bao.arcgis.com/>

EMSI: <http://www.emsi.com>



mississippipowerED.com
 mpcecodev@southernco.com
 800.528.5196